

HARBOR PLACE

BEING A REPLAT OF A PORTION OF TRACT 'Y', CYPRESS ISLAND P.U.D.,
PLAT BOOK 59, PAGES 1 THROUGH 3, LYING IN NORTHWEST ONE-QUARTER (NW 1/4) OF
SECTION 20, TOWNSHIP 41 SOUTH, RANGE 43 EAST,
PALM BEACH COUNTY, FLORIDA.

AUGUST 2007

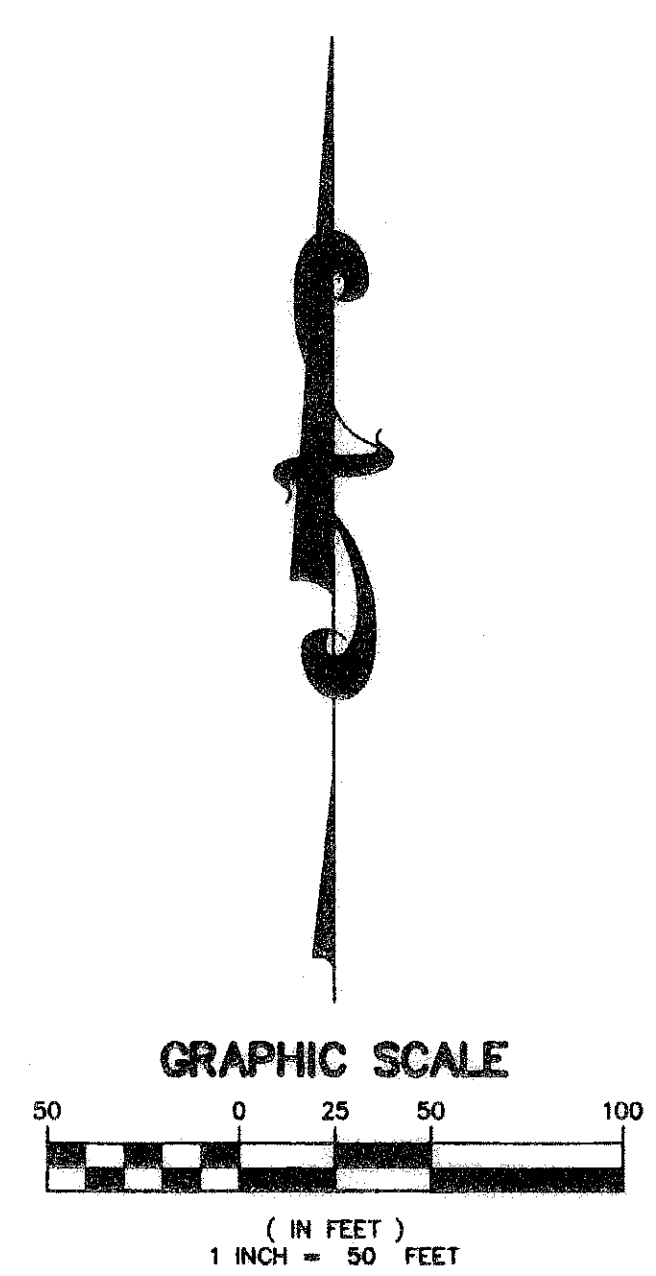
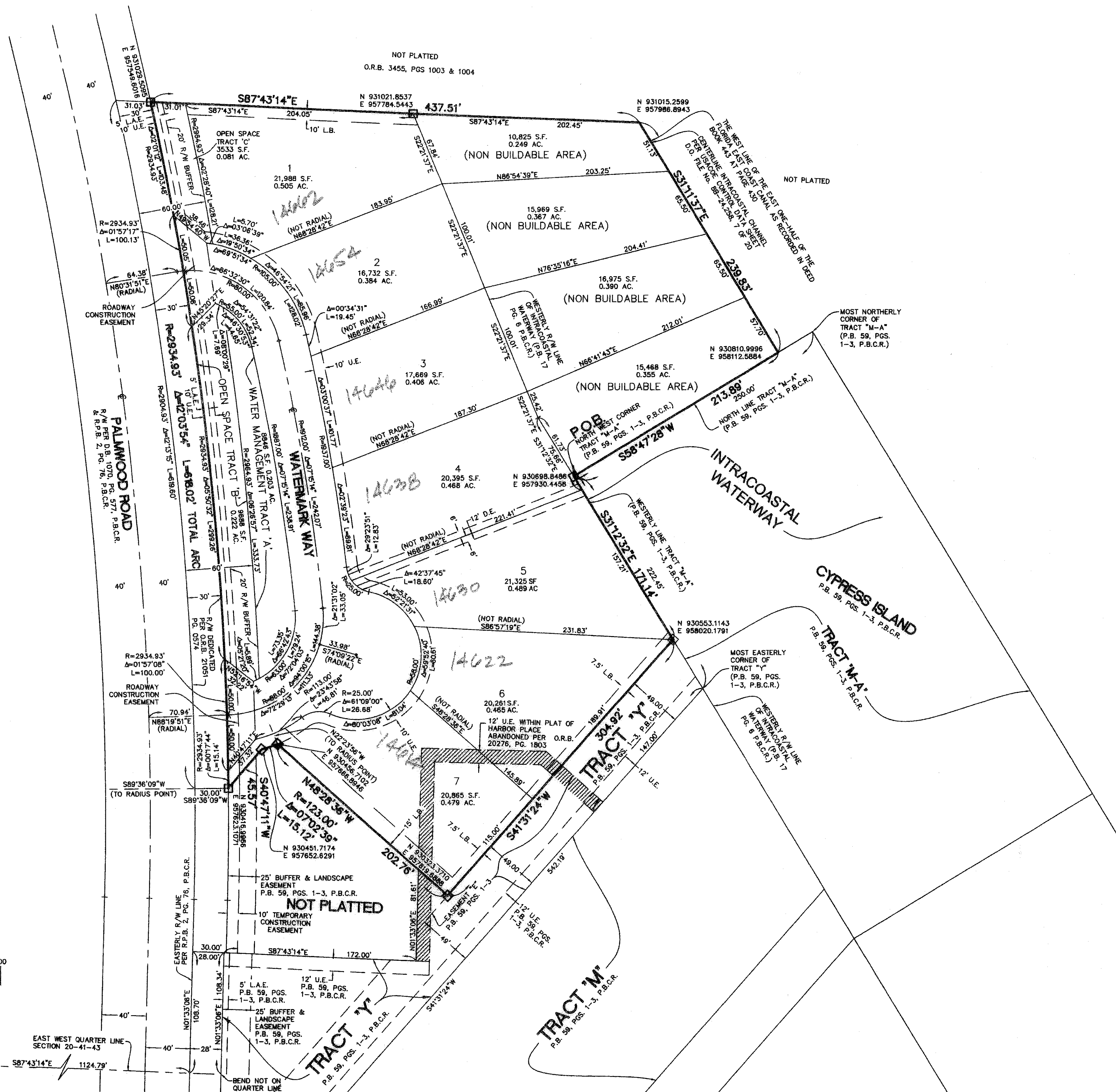
SHEET 2 OF 2

165

STATE OF FLORIDA
COUNTY OF PALM BEACH
This plat was filed for record
at _____ this _____
day of _____, 2007,
and duly recorded in Plat Book
_____, Pages _____, Through

SHARON R. BOCK
Clerk & Comptroller
By: _____

- LEGEND:
- P.B. = PLAT BOOK
 - P.C. = PAGE
 - P.G.S. = PAGES
 - P.B.C.R. = PALM BEACH COUNTY RECORDS
 - R.P.B. = ROAD PLAT BOOK
 - D.B. = DEED BOOK
 - R/W = RIGHT OF WAY
 - U.E. = UTILITY EASEMENT
 - D.E. = DRAINAGE EASEMENT
 - L.A.E. = LIMITED ACCESS EASEMENT
 - L.B. = LANDSCAPE BUFFER
 - R = RADIUS
 - Δ = CENTRAL ANGLE
 - L = ARC LENGTH
 - C = CENTER LINE
 - S.F. = SQUARE FEET
 - AC. = ACRES
 - FS = FLORIDA STATUTES
 - P.C.P. = PERMANENT CONTROL POINT
 - P.R.M. = PERMANENT REFERENCE MOVEMENT
 - LB = LICENSE BUSINESS
 - SEC = SECTION
 - N.T.S. = NOT TO SCALE
 - NO. = NUMBER
 - U.S. = UNITED STATES
 - P.E. = PROFESSIONAL ENGINEER
 - L.L.C. = LIMITED LIABILITY CORPORATION



WEST QUARTER CORNER SECTION 20-41-43
EAST WEST QUARTER LINE SECTION 20-41-43